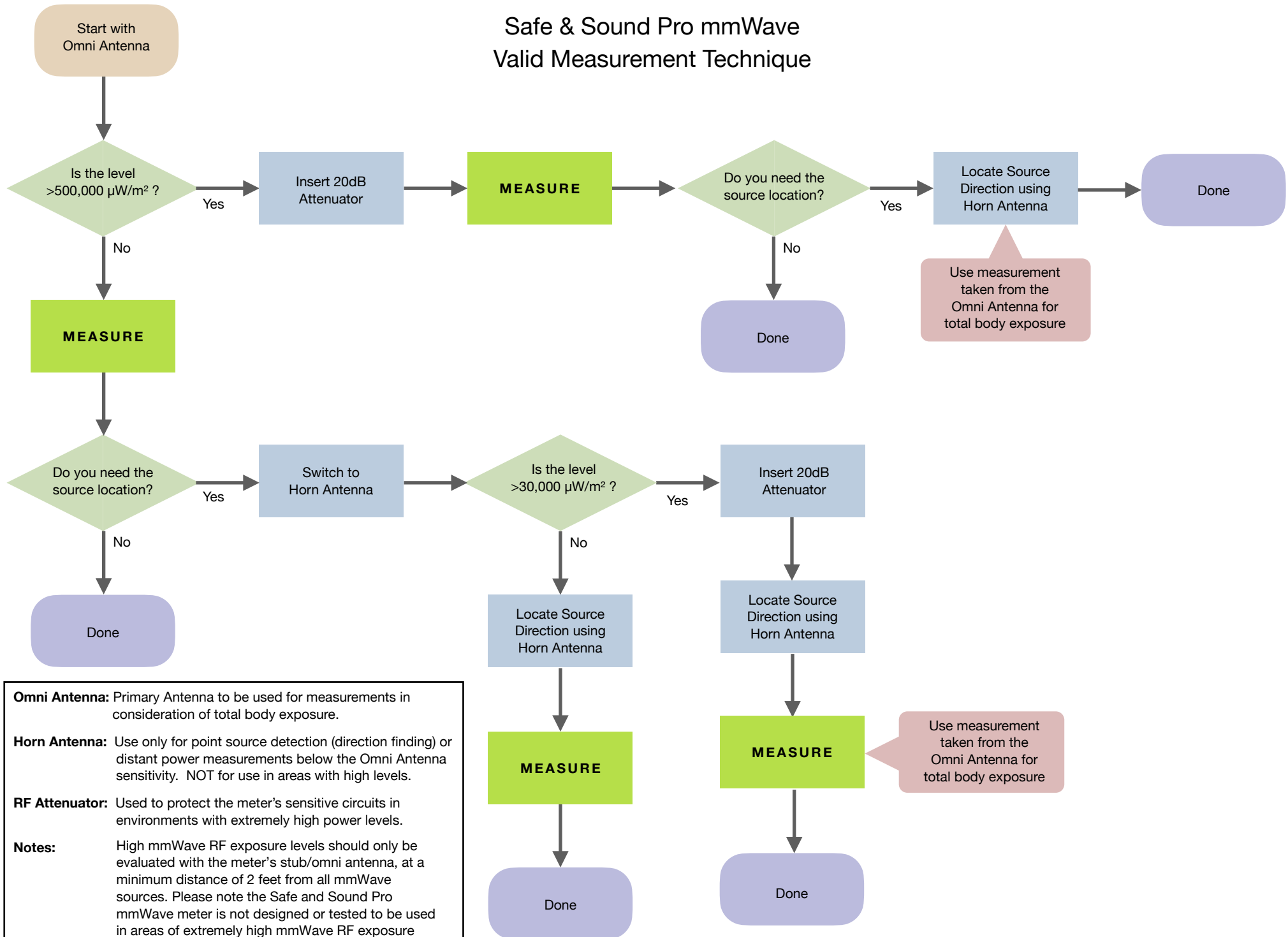


Safe & Sound Pro mmWave Valid Measurement Technique



Omni Antenna: Primary Antenna to be used for measurements in consideration of total body exposure.

Horn Antenna: Use only for point source detection (direction finding) or distant power measurements below the Omni Antenna sensitivity. NOT for use in areas with high levels.

RF Attenuator: Used to protect the meter's sensitive circuits in environments with extremely high power levels.

Notes: High mmWave RF exposure levels should only be evaluated with the meter's stub/omni antenna, at a minimum distance of 2 feet from all mmWave sources. Please note the Safe and Sound Pro mmWave meter is not designed or tested to be used in areas of extremely high mmWave RF exposure levels. The meter's highly sensitive circuits are designed for Building Biology evaluation guidelines.