

Window Film Installation Instructions

Please note that these instructions do not guarantee a successful installation. Professional window film installers are available.

Installation should not commence if glass temperature drops below 40 degrees Fahrenheit, or 5 degrees Celsius.

Parts List

- Distilled or filtered water
- Spray bottle*
- Paper towels- high absorbent (Sparkle, Bounty, Brawny) or soft lint-free cloths
- Mounting solution - Johnson's baby shampoo
- Razor blade scraper - single edge type 1", 3", or 6" scraper (for large windows)
- Masking tape- one ¾" roll
- Cutting guide
- Cutting knife with snap away blades and extra blades
- Drop cloth
- Window squeegee
- Screw driver or tools to remove blinds or window treatment hardware
- Garbage bags

Step 1 – Prepare a 24 oz spray bottle: Add one cap of Johnson's Baby shampoo to empty clean bottle. Fill spray bottle with water (not hot) to top. The baby shampoo does not activate the pressure sensitive adhesive of the film but merely allows the installer to more easily place the film against the glass and slide it into place. If the film is not sliding on the glass during installation, add a little more shampoo. If the film slides too easily, add more water.

Step 2 – Prepare work environment: Move any furniture, blinds, etc that may hinder access to the window. Lay down drop cloths to maintain a neat work area.

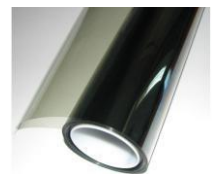
Step 3 – Scrape interior face of window: Wet the glass with contents of the spray bottle. Use single edge safety razors to thoroughly clean dirt and debris from the glass. Make sure to scrape around the edges.

Step 4 – Wash & dry window: Wet the glass again with contents of the spray bottle. Use a window squeegee to wipe the glass clean. Take a paper towel and run along the gaskets (especially the lower edge) to remove any debris that may be trapped. Be careful to remove any lint.

Step 5 – Prepare film: Cut the width of the film out of the box 1-2 inches wider than the window. Cut the length of the film 2 inches longer than the window. Generously wet the glass with the contents of the spray bottle. **Remove the protective liner from the adhesive (inner) side of the film.** (You can apply tape to both sides of a convenient corner and pull apart to start the separation.)

Note: Your fingers will have microscopic dust and dirt so **wash your hands in a clean rinse bucket!** Dust particles are in the air, so are animal hairs and even insects. You want to minimize the possibilities of any of these getting between the glass and film when you install. When you are peeling and sticking you want to be clean, fast and accurate. You will not want the film to touch anything on the way to the glass because it may pick up debris that will need to be washed out before the final squeegee step. Every second between when you wash the glass and when you apply the film dust will be landing on the glass. There is no way to prevent it completely, but you must try to minimize it.

Step 6 – Apply the film: Align the factory edge of the film to one of the edges of the window gasket and press to the glass. Note that if the film slips too easily against the glass that you have added too much shampoo to the spray bottle. Now carefully place the piece of film into exact position, moving slowly so that you don't wrinkle or fold the film. If you accidentally fold it, carefully pull it apart, re-wet it, then continue. With film on glass, look for dirt specks and hairs. If dust



or hair are present carefully peel back the film and remove them, then re-spray that area with solution. This is very common, don't panic, just take your time. Next, lightly squeegee down the center of the window to tack the film into it's correct position.

Step 7 – Squeegee film: Use the window squeegee to remove the water trapped between the glass and the film. You must use firm pressure so that no water remains trapped. Please note that it is impossible to remove all the water and that you will notice tiny water bubbles left behind. The sun will dry out this condition. Squeegee up and down from center, then sideways from the center. Squeegee the entire window vertically then horizontally from the center out to the edges, making a grid-type pattern. This is to push the film out to the sides geometrically. Work from the center out to each side, from the center up, from the center down, working towards the sides from the center, **HORIZONTALLY AND VERTICALLY**. You should end at the 4 corners of the film last. This method insures that the film is efficiently stretched out geometrically, preventing wrinkles and peeling. **The more water drops you get out, the better. This is a difficult step if done in direct sunlight, because the water starts to dry and the adhesive tacks too fast.** Wipe water from the edges of the film with paper towels. Make a final check for dust, sand, hairs, etc.

Step 8 – Trim film: Use a razor knife and a cutting edge and trim the film carefully against the window gasket, ensuring a straight cut. Change blades often, the cutting should feel almost effortless. If the blade drags or snags, change blades. The general rule is to change blades for every window, don't be cheap, it's important!!!

Step 9 – Dry edges: Take a paper towel and run along the edges of the film to remove any excess water. Do not leave standing water.

Step 10 – Clean film: Mildly spray the film with contents of spray bottle and wipe away with window squeegee. This will improve the aesthetic appearance of the film.

Step 11 – Flatten edges: Wrap a paper towel around a small wooden block and press down the edges to ensure good seal.

Step 12 - Edge sealing is required to ensure the no moisture come in contact with the edge of the film. This will protect the edges from peeling away from the window and keep moisture away from the edge of the film. It is best to do this once the film has completely dried (approx. 1 – 2 weeks)

How Do I Clean The Filmed Surface After Installation?

The foil can be cleaned thirty days after installation. It is not as hard as glass, therefore care should be taken.

Note :

- use a mild soap solution or non abrasive window cleaner
- do not use a brush
- foil should only be cleaned wet
- soak particularly dirty spots first
- do not press too hard on foil
- to dry use a squeegee or chamois
- do not use tape or other adhesive products on the film

Warranty:



Residential Warranty Period:	Limited Lifetime
Commercial Warranty Period:	Limited 10 year